

# Colorado Bird Atlas Quarterly

News from the Colorado Breeding Bird Atlas II Project

Volume 1, Issue 1

Spring 2008

San Juan Institute of Natural and Cultural Resources - Fort Lewis College - Durango CO 81301 - 970-247-7245

---

## INSIDE THIS ISSUE:

<i>COBBA II Project Management</i> .....	1
<i>Update - COBBA II Regional Coordinators</i> .....	2
<i>CO BBA II Technical Committee</i> .....	3
<i>New Project Website</i> .....	4
<i>Summary of Volunteer Effort</i> .....	5
<i>Update on Cornell Data Entry Website</i> .....	6
<i>Summary of Atlas Data</i> .....	7
<i>“Thank You” to Volunteers</i> .....	7



Black-chinned hummingbird nest with chicks.  
Photo by Catherine Ortega.

## *Colorado Breeding Bird Atlas II Project Management*

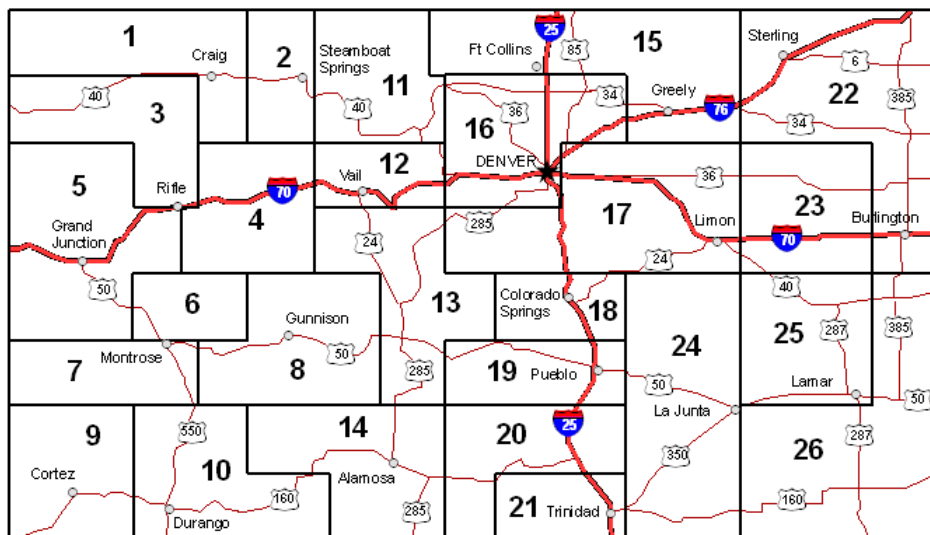
In December, 2007, management of the Colorado Breeding Bird Atlas II Project (COBBA II) was awarded to the San Juan Institute of Natural and Cultural Resources (San Juan Institute), at Fort Lewis College, after a competitive process for grant money put forth by the Colorado Division of Wildlife. Heading up the team at the San Juan Institute is Lynn Wickersham, Project Manager, and Catherine Ortega, Project Administrator. Lynn Wickersham has a B.S. in Wildlife Biology from Colorado State University and an M.S. in Biology from Arkansas State University. She has 13 years of experience as an avian ecologist, with expertise in population ecology of passerine birds. Catherine Ortega is the

Director of the San Juan Institute. She has a Ph.D. in Biology from the Department of Environmental, Population, and Organismic Biology at the University of Colorado, Boulder, and has over 25 years experience conducting bird research. Since taking on their leadership roles for COBBA II, Lynn and Catherine have been busy recruiting project volunteers, Regional Coordinators, and Technical Committee members, as well as organizing field trainings, fundraising, and preparing for the 2008 field season. They are excited to be taking on a large-scale project with such importance to Colorado’s wildlife managers and biologists, and they look forward to the challenge of bringing CO BBA II to completion.

## Update - COBBA II Regional Coordinators

Here is the current list of COBBA II's Regional Coordinators:

<u>Region</u>	<u>Name</u>	<u>Region</u>	<u>Name</u>	<u>Region</u>	<u>Name</u>
1	Forrest Luke	10	Susan Allerton	19	Mark Yaeger
2	Allison Hilf	11	Jim Liewer	20	Vacant
3	Kim Potter	12	Hugh Kingery	21	Tim Crisler
4	Tom McConnell	13	Chuck Hundertmark	22	Steve Larson
5	John Toolen	14	Vacant	23	Hugh Kingery
6	Cheryl Day	15	Connie Kogler	24	John Drummond
7	Coen Dexter	16	Steve Jones	25	Vacant
8	Lori Brummer	17	Hugh Kingery	26	Vacant
9	Paul Morey	18	Brad Steger		



**Colorado Breeding Bird Atlas II Regions**

Since the San Juan Institute assumed management responsibilities for COBBA II, there have been several changes in Regional Coordinators. The following volunteers have stepped down from their roles as Regional Coordinator, but are still conducting atlas field work: Doug Faulkner (Region 12); Sherrie York (Region 13); Bill Kaempfer (Region 16); Tony Leukering (Region 20); and Duane Nelson (Region 25). Each played a big role in recruiting volunteers for atlasing during the 2007 field

season, and we extend a big **“thank you”** to each for their efforts in their respective regions. To offset these losses, several project volunteers have stepped up to fill the roles of Regional Coordinator, including Hugh Kingery (Region 12 and 23); Chuck Hundertmark (Region 13); and Steve Jones (Region 16). Thanks to all Regional Coordinators for the time and effort they bring to the COBBA II project. The project would not be successful without you!!!!

## *COBBA II Technical Committee*

The COBBA II Technical Committee was developed to provide guidance and assistance on all aspects of the project, from project logistics to scientific expertise, to facilitate successfully carrying the project from its early stages through to the final publication. The Technical Committee members include:

- Karen Baud (ERO Resources)\*
- John Demboski (Denver Museum of Nature & Science)\*
- Beth Dillon\*
- Ted Floyd (American Birding Association)\*
- Clinton Francis (University of Colorado, Boulder)
- David Hanni (Rocky Mountain Bird Observatory)
- Aran Johnson (Southern Ute Indian Tribe)
- Hugh Kingery\*
- David Klute (Colorado Division of Wildlife)\*
- Pat Magee (Western State College)
- Pete Plage (U.S. Fish and Wildlife Service)\*
- Mike Seruto\*
- Charlie Sharp (Bureau of Land Management)
- Robert Skorkowsky (U.S. Forest Service, Region 2)\*
- Ken Strom (Audubon Colorado)\*
- John Toolen (Colorado Division of Wildlife, retired)\*

\*Member of the Colorado Bird Atlas Partnership Steering Committee

The first meeting of the COBBA II Technical Committee took place on March 18 at the Colorado Division of Wildlife (CDOW) Office in Denver. Technical Committee members were also able to sit in on the meeting via video conference from the Grand Junction and Durango CDOW offices. During the meeting, the COBBA II Project Manager proposed the development of two Sub-committees, including Project Management/Logistics and Science.

The purpose of the Project Management/Logistics Sub-committee is to provide guidance on the project's administrative/management aspects, including but not



Yellow warbler fledgling.  
Photo by Catherine Ortega.



Western wood-pewee fledglings.  
Photo by Catherine Ortega.

limited to fundraising, recruitment/training, communication/public outreach, project website, and early development/design/management for the publication (book) and website database (online version of the book).

The purpose of the Science Sub-committee is to provide technical expertise on avian biology/ecology, field methodologies, and statistics to assess the need for supplemental surveys for under-sampled species and to provide guidance on data management, analysis, presentation, and interpretation for the publication/database, etc.

## *New Project Website*

The San Juan Institute has launched the Colorado Breeding Bird Atlas II informational website, available at the following location:

[www.cobreedingbirdatlasii.org](http://www.cobreedingbirdatlasii.org)

The web page includes many pages and links and provides the following information:

- Project Background and Partners
- Map of COBBA II Regions and Regional Coordinator Contact Information
- Project Manager and Administrator Contact Information
- Downloadable Data Cards, Field Manuals, and “Data Entry Manual”
- Link to the Cornell Lab of Ornithology Data Entry Website
- Volunteer Photo Gallery
- Frequently Asked Questions
- Information on Becoming a Volunteer
- List of Trainings, Workshops, Blockbusters/Rendezvous

Examples of photos from the “Volunteer Photo Gallery”:



Juvenile boreal owl.  
Photo by Jack Harlan



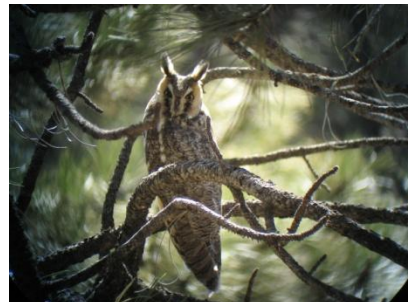
Osprey pair at nest. Photo by Gregg Goodrich.



Adult sage thrasher.  
Photo by Steve Jones.



White-tailed ptarmigan fledglings.  
Photo by Brad Steger.

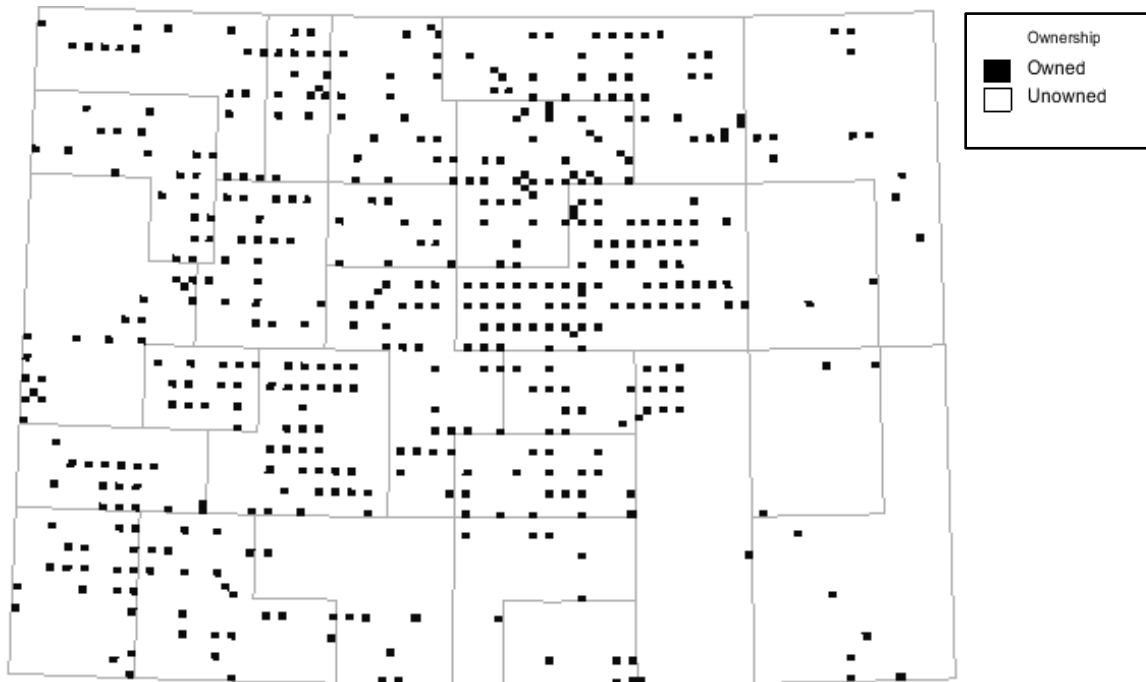


Adult long-eared owl. Photo by Sol Miller.

*Summary of Volunteer Effort*

<b>Number of Priority Blocks</b>	<b>1,883</b>
<b>Number of Blocks Assigned</b>	<b>638</b>
<b>Number of Blocks Assigned (Website)*</b>	<b>488</b>
<b>Number of Blocks with Data*</b>	<b>485</b>
<b>Number of Blocks Complete*</b>	<b>8</b>
<b>Number of Block Effort Hours*</b>	<b>3,742</b>
<b>Total Auto Miles*</b>	<b>41,193</b>
<b>Total Data Submissions*</b>	<b>19,359</b>
<b>Number of Registered Participants*</b>	<b>217</b>
<b>Number of Species Reported*</b>	<b>253</b>
<b>Number of Species Confirmed*</b>	<b>207</b>

\*Based on data entered on the Cornell Lab of Ornithology website (as of 5/21/08).

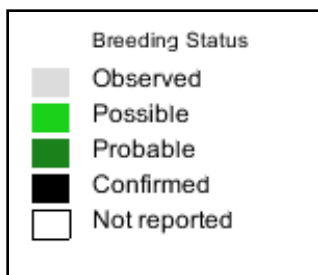


Map generated showing COBBA II regions and block assignments.

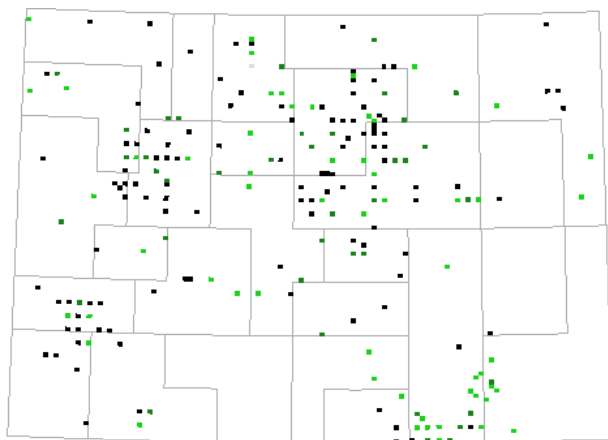
Source: <http://bird.atlasing.org/Atlas/CO> (as of 5/21/08).

The data entry website for COBBA II was open to volunteers in January of 2008. Project Regional Coordinators participated in beta-testing of the website prior to its release to project volunteers. During beta-testing, Regional Coordinators identified some glitches with the website platform, and the Project Manager has been working with Cornell Lab of Ornithology (Cornell) to address these issues and revise the website accordingly. To date, there are 217 volunteers registered on the data entry website, with data entered in 485 atlas blocks. Regional Coordinators throughout the state have been offering workshops for

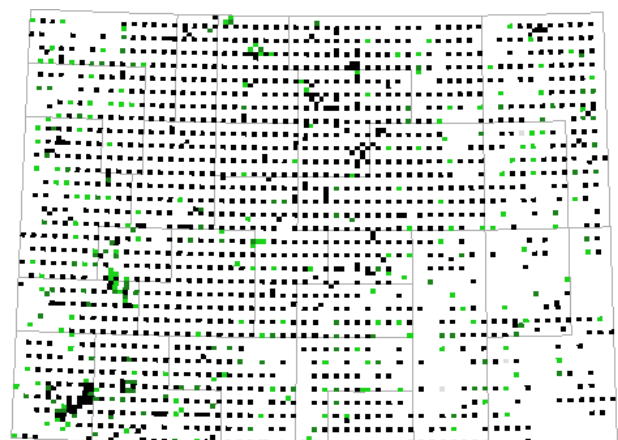
the data entry website, working with their volunteers to insure that they feel comfortable entering their data with ease. One of the best features of the Cornell platform is that it allows project participants to track the effort of their blocks and regions as well as the effort throughout the state. Maps depicting breeding status per block can be generated for each species observed during COBBA II. Further, the website also provides maps for each species based on the data from the first COBBA project. This allows the volunteers to compare what was observed in COBBA I with COBBA II (see example below).



American robin. Photo by Catherine Ortega.



Breeding status for American robin during COBBA II (2007-11).



Breeding status for American robin during COBBA I (1987-94).

## Summary of Atlas Data

Region	No. Priority Blocks	No. Blocks Assigned	No. Species Recorded *	No. Species Confirmed *	% of Species Confirmed
1	72	16	102	41	40%
2	32	26	87	51	59%
3	64	30	135	61	45%
4	60	43	130	63	48%
5	108	35	129	57	44%
6	28	22	67	16	24%
7	48	33	128	89	70%
8	76	29	37	9	24%
9	120	24	127	41	32%
10	76	31	108	56	52%
11	60	40	128	77	60%
12	32	19	88	39	44%
13	79	35	119	76	64%
14	76	8	0	0	0%
15	103	38	106	43	41%
16	73	73	157	103	66%
17	116	67	151	112	74%
18	32	24	109	52	48%
19	44	22	113	49	43%
20	56	9	64	17	27%
21	32	5	82	20	24%
22	128	12	77	24	31%
23	64	4	21	5	24%
24	112	12	156	63	40%
25	64	8	60	30	50%
26	128	13	102	26	25%

\* Based on data entered in the Cornell data entry website.

### *“Thank You” to Volunteers*

The Project Manager and Administrator extend a big **“thank you”** to all COBBA II volunteers for the time and effort they have put forth to this project. COBBA II would not be successful without you, and we hope you will continue your efforts with the project until field work has been completed.

Happy Atlasing!!

Lynn and Catherine



Common nighthawk chicks.  
Photo by John Wickersham.